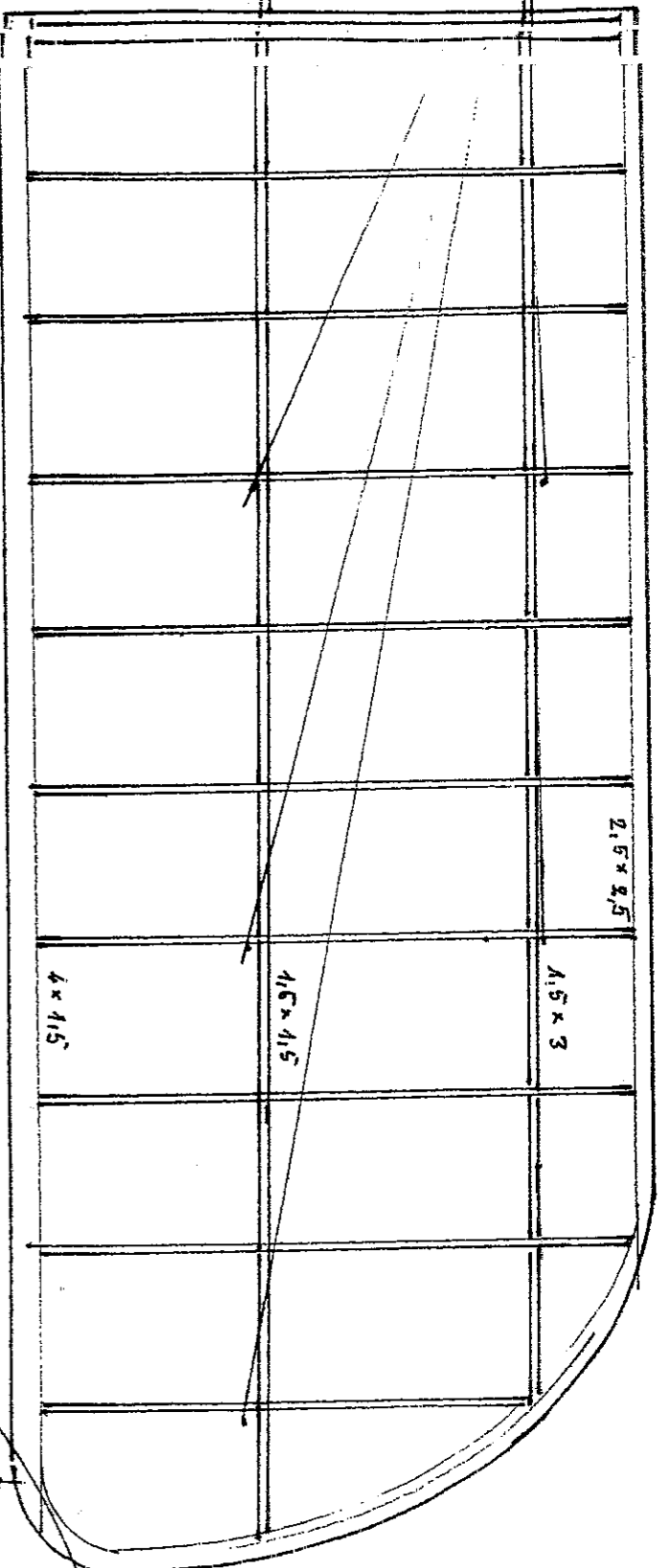
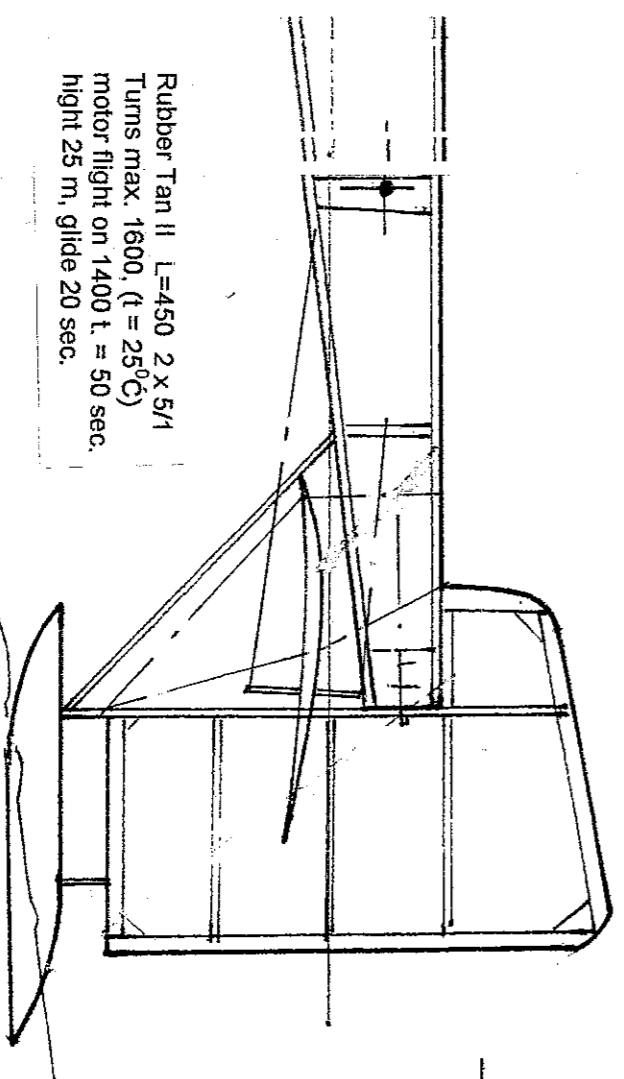
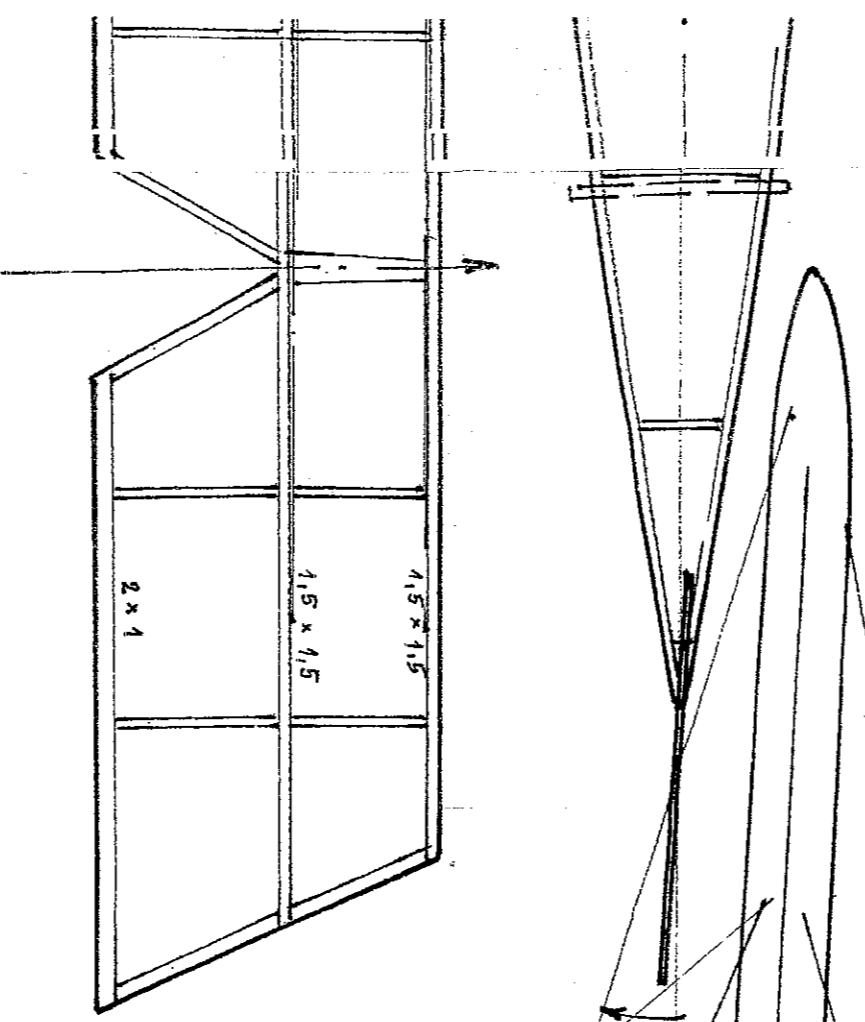
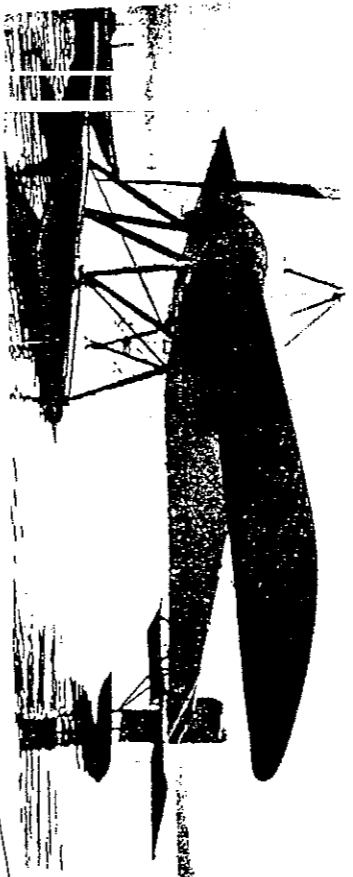


Rubber
Turns 1
motor 1
height 2

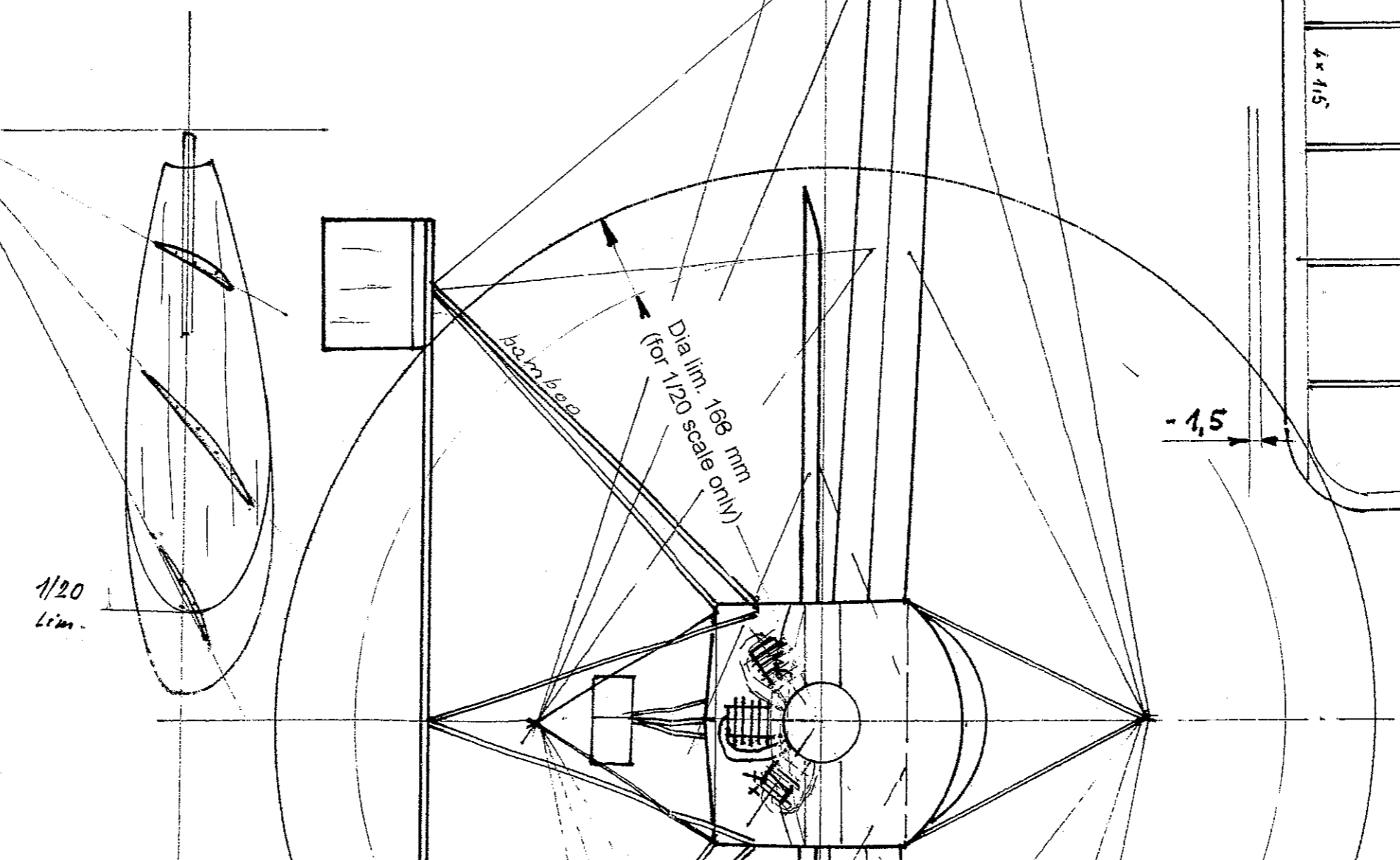
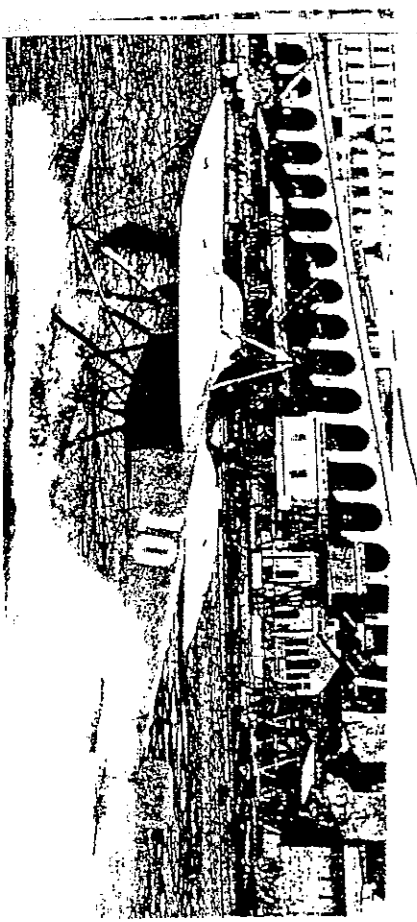


Weights :

Fuselage + nose block	4,5 g
Wing	1,5
Tail	0,4
Floats 2 x 1,1 + 0,2 =	2,4
Balast Pb in fl. 2 x 0,5 =	1,0
Struts + wires	1,6
Prop + string washer	2,0
All scalleton	13,4
Cover + varnish	4,6
Empty	18,0
Rubber	4,5
Gentle add balast	0,5
Flying weight	23,0 g



Rubber Tan II L=450 2 x 5/4
 Turns max. 1600. (t = 25°C)
 motor flight on 1400 t. = 50 sec.
 hight 25 m, glide 20 sec.



Dokumentation :
FRENCH AEROPLANES BEFORE THE GREAT WAR
 (p. 67 - reference, photos, dimensions, matriculation)
 Clarke SMILEY collection (3 - view only)
 The Schneider Trophy (information of this meeting entry)

Colors :
 Whole plane was blue, racing No. 10 or 7 were white

1/20 scale: Borel Chemet 2-seater
 Entered at Monaco in 1913